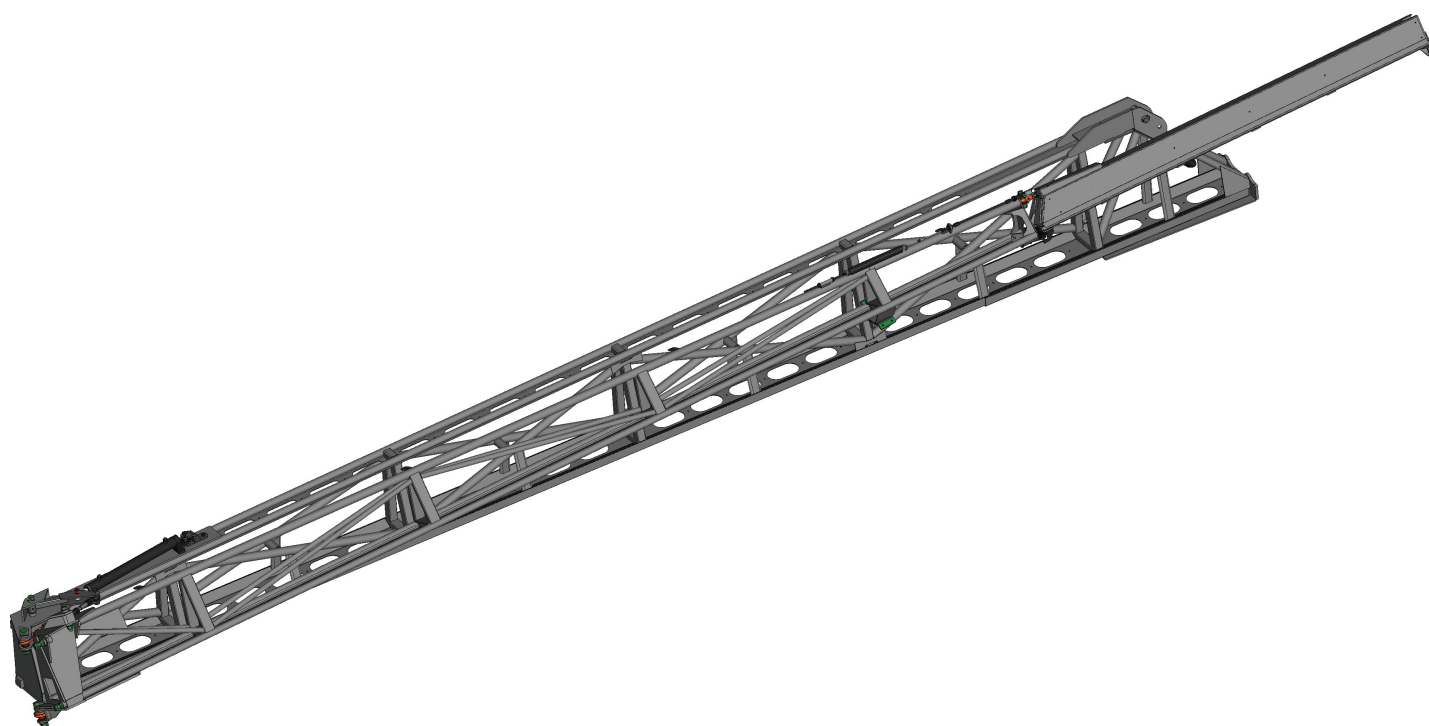


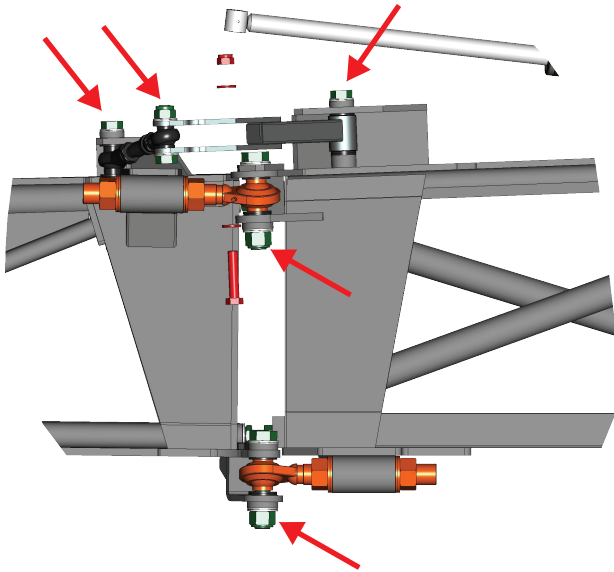
Adjustment and maintenance instructions

TR4R boom



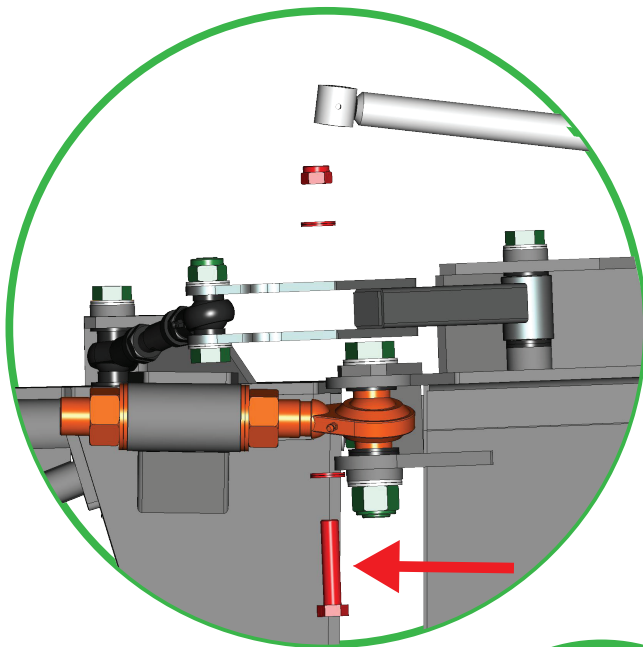
www.pommier-scebp.com

TR4R boom adjustments

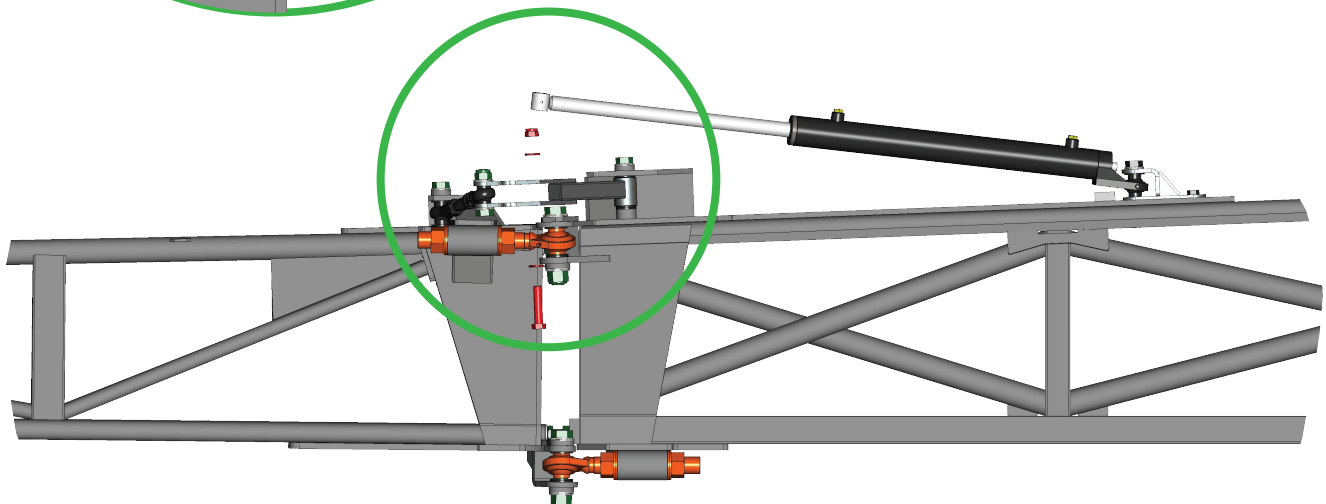


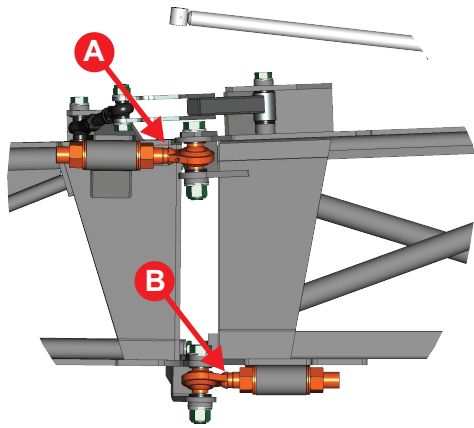
Before adjusting the boom, tighten all the bolts at the linkage points.

Use a wrench with a tube to tighten the bolts to maximum.



1/ Unfold the boom and remove the bolt at the cylinder rod end.

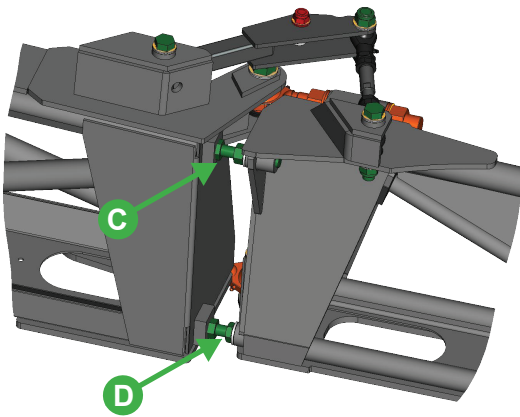




2/ Check if inner and outer sections are perfectly horizontal.

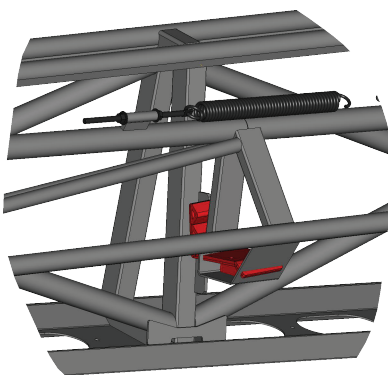
If not, screw or unscrew the two ball joints **A** and **B**.

Tighten the ball joint nuts very slightly once the boom is perfectly horizontal.

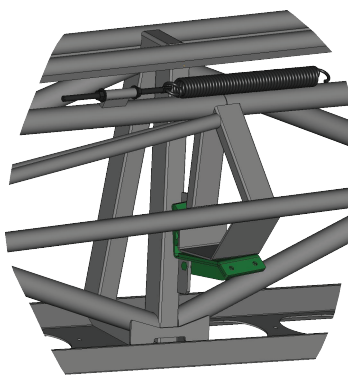


At the same time, pre-adjust the two stops **C** and **D** between inner and outer sections so that the boom is well straight.

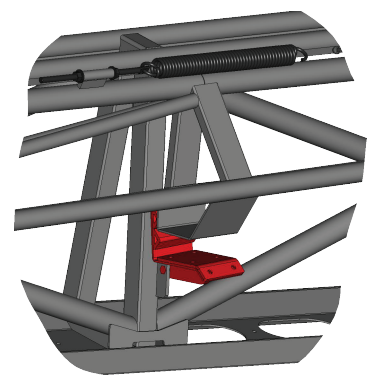
3/ Fold the boom by hand so that the outer section gently rests in its bracket on the inner section.



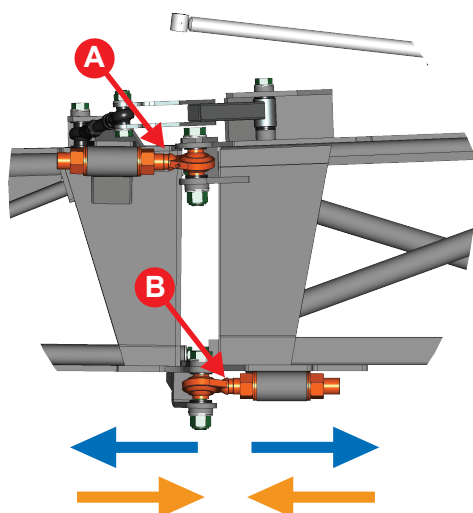
Adjustment too low



Correct adjustment



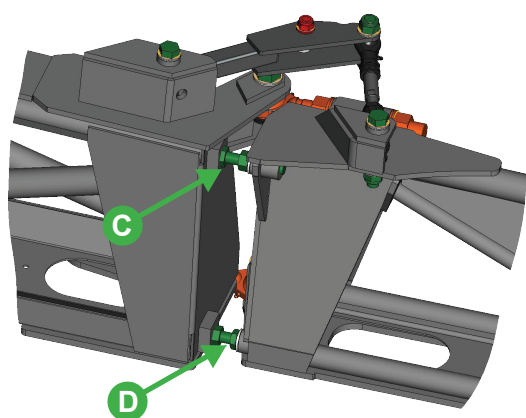
Adjustment too high



4/ If the outer section is too high, unfold the boom again and without disturbing the horizontal setting, adjust the two ball joints A and B.

You must move away the outer section from the inner section.

On the other hand, if in folded position, the outer section is too low, you have to bring the outer section closer to the inner section.



When the outer section sits correctly on its bracket, tighten the ball joint nuts. To ensure a proper tightening, we recommend to use a tube as an extension at the end of the wrench.

Check again the alignment of the boom by refining the adjustment of stops C and D.

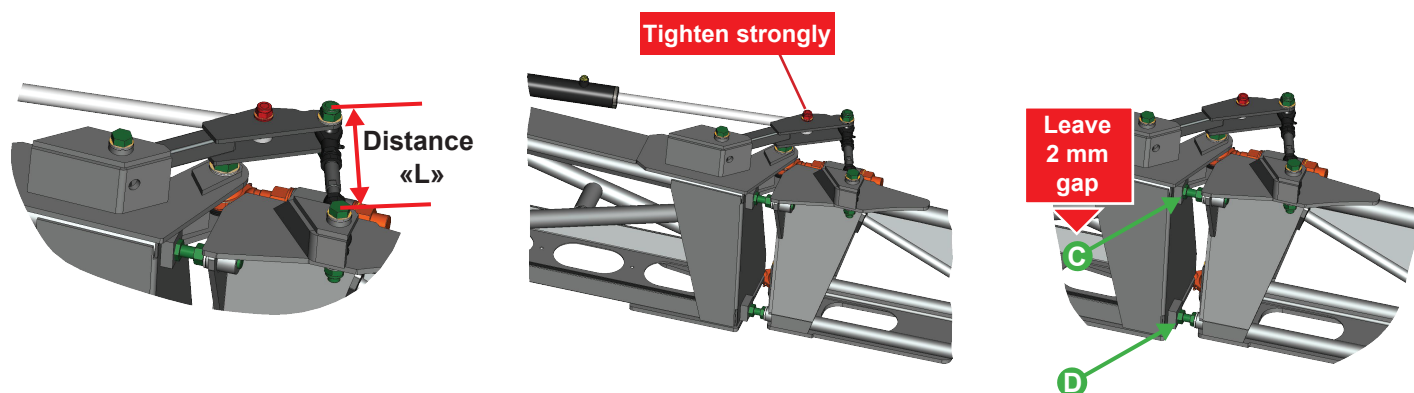
VERY IMPORTANT

- Stop D must be in contact
- There must be a 2mm gap between stop C and the aluminum

5/ Re-attach the cylinder rod to the hinge arm and tighten strongly the bolt.

6/ Reduce the distance «L» as much as possible on the double ball joint. Hydraulically, fully extend the cylinder and then increase the distance «L» until stop D is in contact.

When stop D is in contact, stop C should be at 2mm of touching the aluminum.



7/ Continue to increase the distance «L» of the double ball joint until stop C comes in contact.

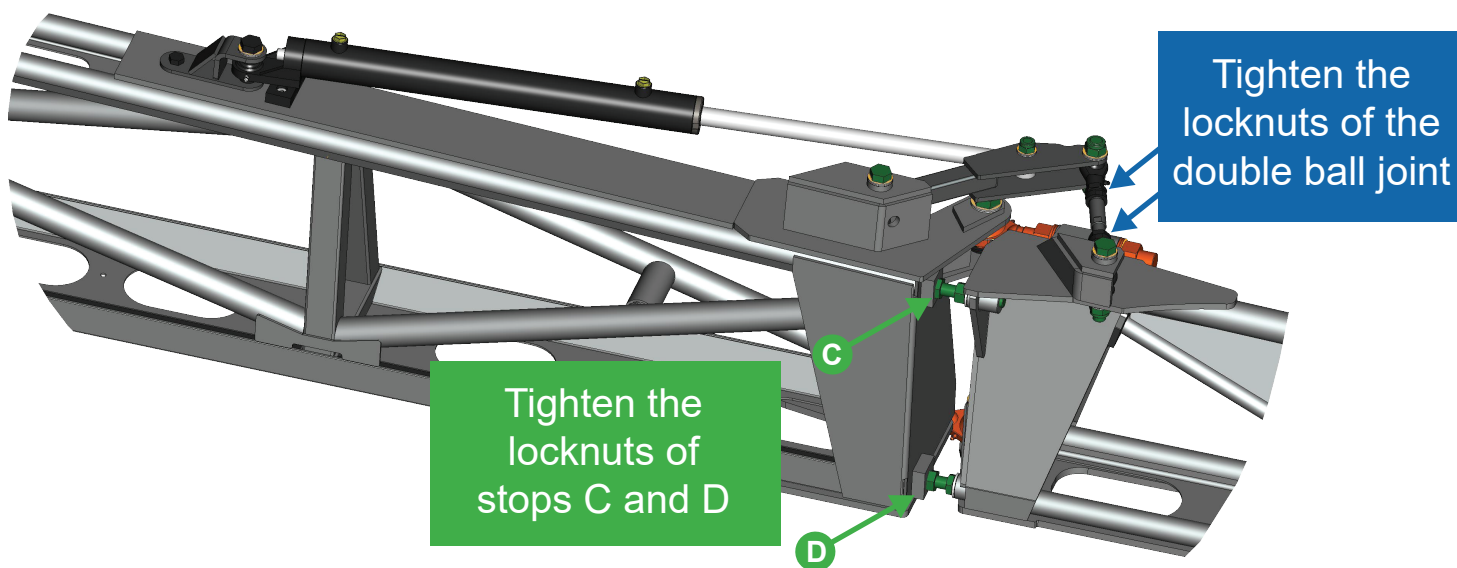
8/ Continue to unscrew the double ball joint until a slight buckling is visible on the cylinder rod. (The buckling corresponds approximately to 2 to 3mm of additional stroke on the rod).

Caution! During this operation, verify that the cylinder is fully extended so when you unscrew the double ball joint, this is not the cylinder that retracts.

9/ Check again that the boom is still well aligned with the cylinder under hydraulic pressure because it could maladjust slightly the boom.

Repeat step 6 if you need to readjust stops C and D.

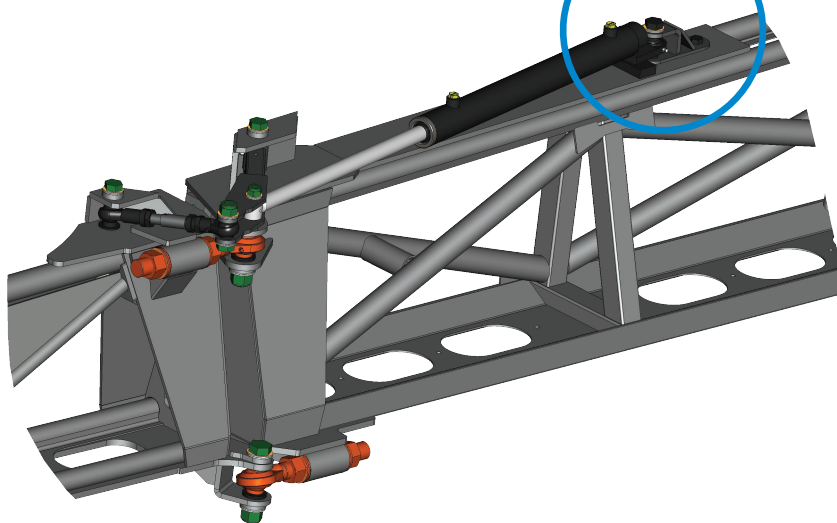
When the boom is perfectly straight, tighten strongly the locknuts of stops C and D as well as those of the double ball joint.



10/ (only applicable to the booms equipped with a folding cylinder having a grub screw and a locknut on the location as shown on the picture)

Remove the hydraulic hoses and unscrew screw **G**.

Fold the boom manually until the outer section is in its bracket on the inner section.



Tighten screw G until you feel resistance. This means the screw is pushing against the cylinder rod.

When the screw is in contact with the rod, unscrew it by approximately 2 to 3 mm, then tighten the locknut. Screw G adjusts the retraction stroke of the cylinder rod.

Cleaning the aluminum boom

-Clean the boom once a year with a suitable product as «SUPER NET ALU».

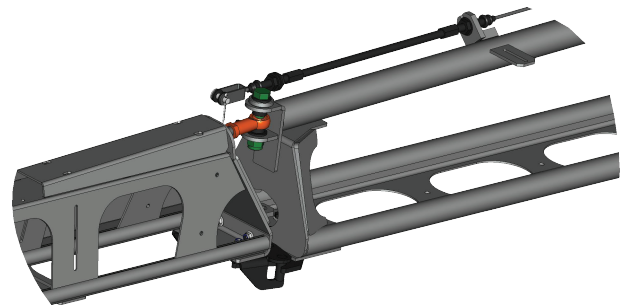
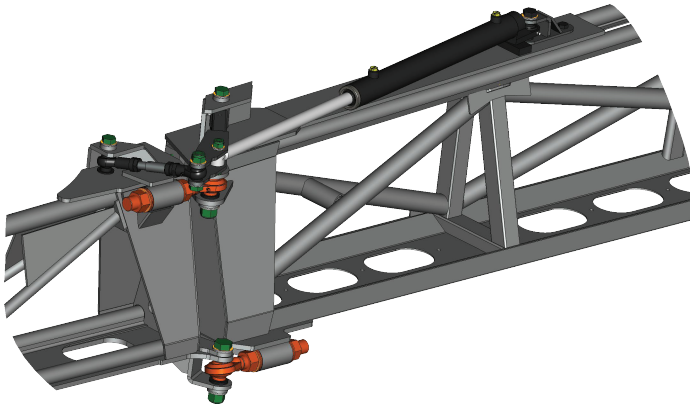


Maintenance & care of your aluminum boom

Weekly checks

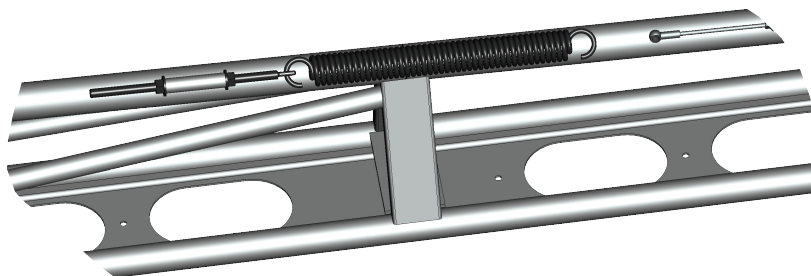
Bolts and nuts check

-Check that all the bolts and nuts are correctly tightened or if necessary tighten them with suitable tools (**wrench with 1 meter long extension tube**).



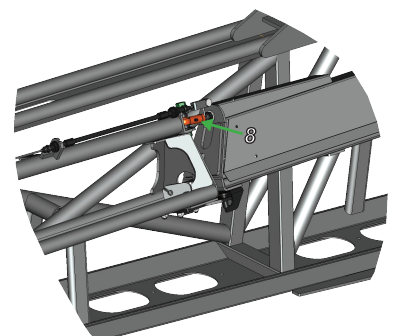
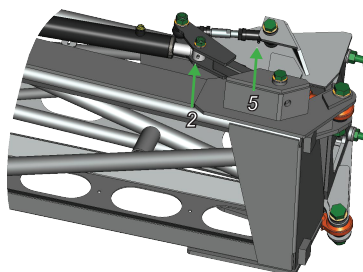
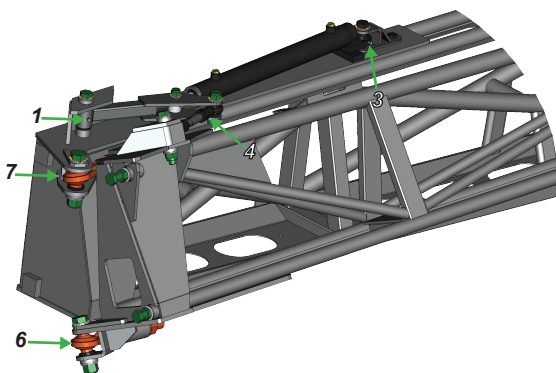
Spring

-Check the breakaway spring tension. The tension of the spring is its zero state plus **100mm (4 inches)**.

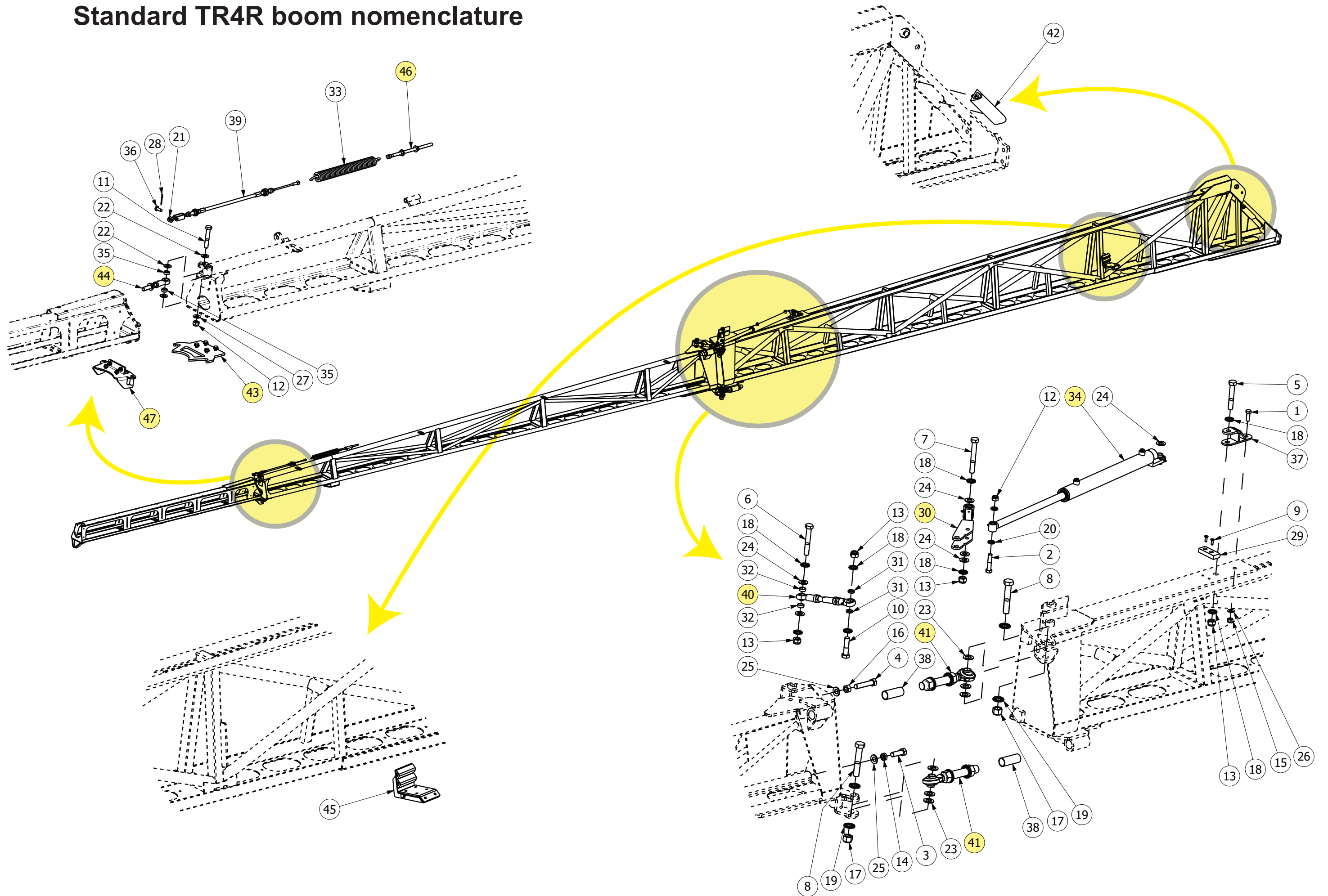


Lubrication

-Lubrication of all linkage points as well as all ball joints and pin joints. (**8 grease fittings along the boom**).



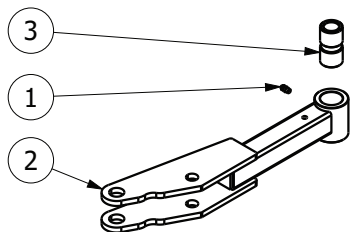
Standard TR4R boom nomenclature



Standard TR4R boom nomenclature

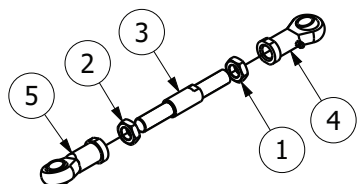
Nb	Reference	Qty	Description
1	000-004-0	1	HH screw M14x40 DIN933 Deltaprotekt
2	000-011-0	1	HH screw M16x75 DIN931 Deltaprotekt
3	000-012-0	1	HH screw M20x60 DIN933 Deltaprotekt
4	000-015-0	1	HH screw M20x100 DIN933 Deltaprotekt
5	000-018-0	1	HH screw M20x120 DIN931 Deltaprotekt
6	000-020-0	1	HH screw M20x130 DIN931 Deltaprotekt
7	000-021-0	1	HH screw M20x150 DIN931 Deltaprotekt
8	000-025-0	2	HH screw M1"x5 1/2" DIN931 Deltaprotekt
9	000-038-0	2	Socket flat head screw M8x25 DIN933 Deltaprotekt
10	000-165-0	1	HH screw M20x80 DIN931 Deltaprotekt
11	000-258-0	1	HH screw M16x90 DIN931 Deltaprotekt
12	000-485-0	2	Lock nut M16 stainless
13	000-486-0	4	Lock nut M20 stainless
14	000-510-0	1	Low hex nut M24 200 right pitch
15	000-548-0	1	Lock nut M14 stainless
16	000-555-0	1	Hex nut M20 Deltaprotekt
17	000-641-0	2	Lock nut 1" stainless
18	000-700-0	8	Self-locking washer Ø20 large
19	000-702-0	4	Self-locking washer Ø1" large
20	000-711-0	2	Self-locking washer Ø16 large
21	000-796-0	2	Flat washer Ø10 Deltaprotekt
22	000-810-0	3	Flat washer Ø16 Deltaprotekt
23	000-813-0	6	Flat washer Ø26 Deltaprotekt
24	000-819-0	6	Flat washer Ø20 Deltaprotekt
25	000-831-0	2	Contact washer Ø20
26	000-832-0	1	Contact washer Ø14
27	000-836-0	1	Contact washer Ø16
28	000-865-0	1	Cotter pin Ø3.2x40 stainless
29	001-011-0	1	Plastic support for cylinder 95x40x18
30	001-195-G	1	TR4R left hinge arm with bushing
31	001-212-0	2	Spacer Øext28/Øint20 thickness 5mm
32	001-231-0	2	Bushing Øext28/Øint20 thk 9.5 Deltatone
33	001-284-0	1	Steel traction spring wire Ø7 Øext42 lg 350mm
34	001-499-0	1	Cylinder DA Ø50/30 cushioned painted
35	001-670-0	2	Steel bushing Ø16.2/24 thk 9.5mm Deltatone
36	001-732-0	1	Ø10mm stainless shaft for breakaway cable
37	001-949-0	1	TR4 folding cylinder fastening
38	002-614-0	2	Round tube Ø38 thk 2 lgth 98mm
39	003-187-0	1	Cable + reinforced sheath for breakaway
40	010-016-0	1	Double ball joint Ø20 with threaded rod lg 160mm
41	010-026-0	2	Ball joint Ø25 threaded rod M34 + screws
42	010-027-0	1	Triangular rubber lg 200mm + screws
43	010-029-0	1	Breakaway hinge plate with screws
44	010-031-0	1	Breakaway ball joint
45	010-081-G	1	TR4/TR4R left outer section support + hardware
46	010-090-0	1	Complete breakaway spring hook
47	010-291-0	1	Breakaway hinge angle with screws

30 001-195-G
001-195-D



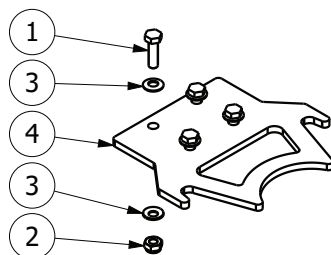
Nb	Reference	Qty	Description
1	000-851-0	1	Straight grease nipple M6
2	001-195-G-01	1	TR4R left hinge arm
3	001-204-0	1	Steel bushing 630 lg 57 thk 5mm

40 010-016-0



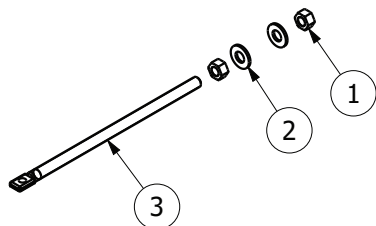
Nb	Reference	Qty	Description
1	000-511-0	1	Low hex nut M24 200 right pitch
2	000-512-0	1	Low hex nut M24 200 right pitch
3	001-199-0	1	Threaded rod RH/LH M20 lg 150mm Deltatone
4	001-601-D	1	Female Ball joint Ø20mm Right pitch
5	001-601-G	1	Female ball joint Ø20mm left thread

43 010-029-0



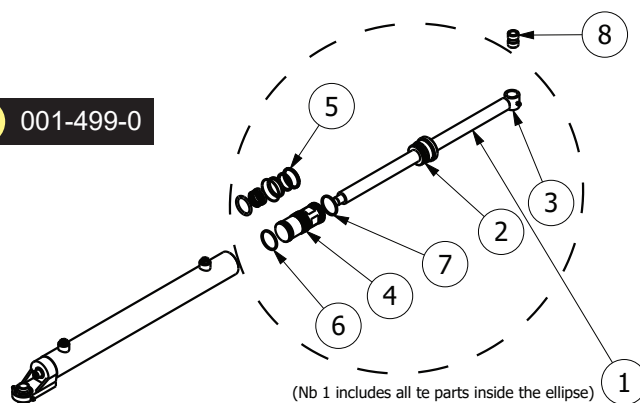
Nb	Reference	Qty	Description
1	000-197-0	4	HH screw M10x35 DIN933 Deltaprotekt
2	000-539-0	4	Lock nut M10 stainless
3	000-838-0	8	Contact washer Ø10
4	001-968-0	1	TR4/RHA/RHA3/B3 breakaway hinge plate

46 010-090-0



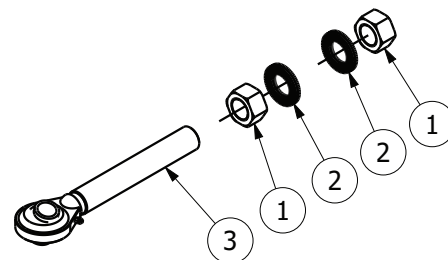
Nb	Reference	Qty	Description
1	000-500-0	2	Hex nut M12 Deltaprotekt
2	000-795-0	2	Flat washer Ø12 Deltaprotekt
3	002-086-0	1	Spring hook

34 001-499-0



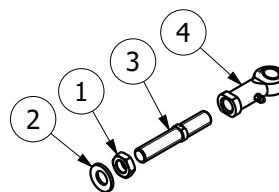
Nb	Reference	Qty	Description
1	002-184-0	1	Complete Ø50/30 S450 cushioned cylinder rod with head + seals kit
2	001-577-0	1	Head bush DA 50/30
3	001-547-0	1	Cylinder rod DA 50/30 S450 cushioned
4	002-615-0	1	Piston DA 50/30 cushioned
5	001-568-0	1	Cylinder Seals kit DA 50/30
6	001-490-0	1	Cushioned piston ring 0.05
7	001-491-0	1	Cushioned piston ring 0.15
8	001-218-0	1	Spacer Ø25 thk 5 lg 35 for cylinder

41 010-026-0



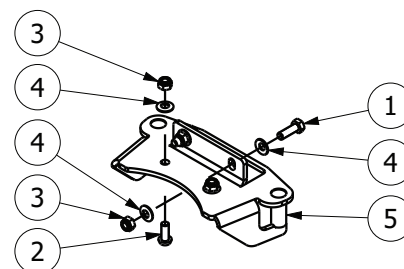
Nb	Reference	Qty	Description
1	000-596-0	2	Hex nut M34 pitch 200 Deltaprotekt
2	000-704-0	2	Self-locking washer Ø33 large
3	002-092-0	1	Ball joint Ø25 + threaded rod M34 lg 210mm

44 010-031-0



Nb	Reference	Qty	Description
1	000-508-0	1	Low hex nut M24 200 right pitch
2	000-836-0	1	Contact washer Ø16
3	001-198-0	1	threaded rod RH/LH M16x2
4	001-600-G	1	Ball joint Ø16 left threaded + M6 grease nipple

47 010-291-0



Nb	Reference	Qty	Description
1	000-168-0	2	HH screw M8x25 DIN933 Deltaprotekt
2	000-177-0	2	Button screw M8x25 DIN933 Deltaprotekt
3	000-538-0	4	Lock nut M8 stainless
4	000-833-0	6	Contact washer Ø8
5	003-629-0	1	TR4/RHA3/B3 breakaway reinforced hinge angle

All our booms are designed and built using over 30 years knowledge and experience.

Pommier's expertise and the quality of our products have made us a world-renowned designer and manufacturer of spray booms.

Since the first boom left our factory in 1986, we have delivered over 30,000 more to our customers.

Our expert designers and engineers work closely with our customers, and we tailor our booms to their machines in accordance with their requests and requirements.

Pommier also work with a large number of sprayers manufacturers in France and worldwide.



28 Rue de la Conie
Viabon
28150 Eole en Beauce
France

Ph: +33 (0)2 37 99 96 80
Fax: +33 (0)2 37 99 10 81



www.pommier-scebp.com